

# \$200,000 - 42,43 ,44 Manor Yaphank, Manorville

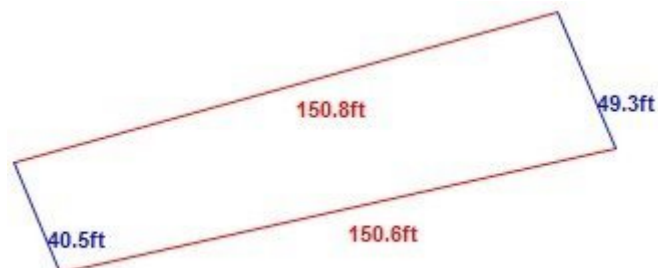
MLS#3348091

## \$200,000

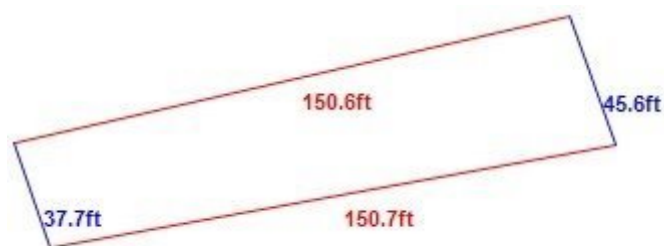
Bedroom, Bathroom,  
Lots & Land on 0.35 Acres

N/A, Manorville, NY

L1 INDUSTRIAL. THIS IS FOR 3 ADJACENT LOTS APP 40X150 EACH. TAXES ARE 486.00 PER LOT. PROPERTY IS CLEARED, LEVEL AND ALREADY [FENCED.LOTS](http://FENCED.LOTS "FENCED.LOTS") ARE BEING SOLD TOGETHER.



OneKey MLS



OneKey MLS

## Essential Information

MLS#	3348091
Price	\$200,000
Total Taxes	\$468
Lot Square Footage	18,000
Acres	0.35
Type	Lots & Land
Sub-Type	Unimproved Land
Status	Pending



OneKey MLS

## Community Information

Address	42,43 ,44 Manor Yaphank
Subdivision	N/A
City	Manorville
County	Suffolk
State	NY
Zip Code	11949

## Amenities

Utilities	Electric Available, Electricity Available
Features	Cleared, Corners Marked, Borders State Land, Level

## Exterior

Lot Description      Cleared, Corners Marked, Borders State Land, Level

## School Information

District              Eastport-South Manor  
Middle              Eastport-South Manor Jr-Sr Hs  
High                 Eastport-South Manor Jr-Sr Hs

## Additional Information

Date Listed         September 25th, 2021  
Days on Market    12  
Zoning              Other  
HOA Fees          \$0

## Listing Details

Listing Information Provided Courtesy of:      Brookhampton Realty



Information Copyright 2021, OneKey® MLS. All Rights Reserved.

The source of the displayed data is either the property owner or public record provided by non-governmental third parties. It is believed to be reliable but not guaranteed. This information is provided exclusively for consumers'™ personal, non-commercial use.

The data relating to real estate for sale on this website comes in part from the IDX Program of OneKey® MLS.

Information Copyright 2021, Multiple Listing Service of Long Island, Inc. All Rights Reserved.