

\$5,000,000 - 30-2 Hoffstot Ln, Sands Point

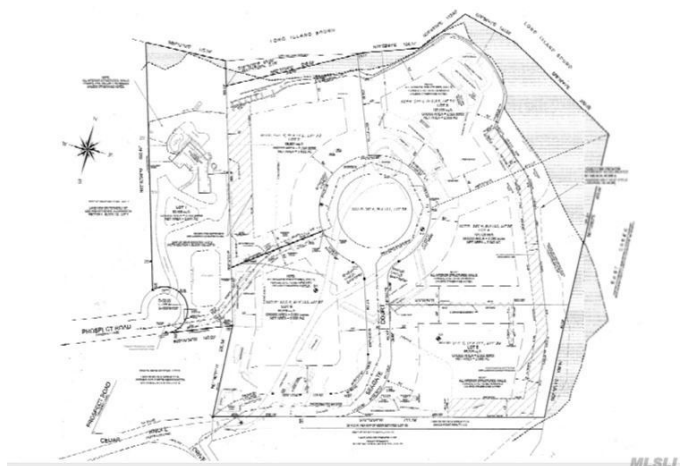
MLS #3136101

\$5,000,000

Bedroom, Bathroom,
Lots & Land on 2 Acres

N/A, Sands Point, NY

Land's End is the premier waterfront residential enclave on the North Shore of Long Island, offering just five exclusive buyers architecturally stunning homes in an once-in-a-lifetime setting in a most prestigious location within a top achieving school district, easily commutable to NYC. Total acreage 2.194 acres, Net acreage 2.055 acres.



Essential Information

MLS #	3136101
Price	\$5,000,000
Acres	2.19
Type	Lots & Land
Status	Active

Community Information

Address	30-2 Hoffstot Ln
Subdivision	N/A
City	Sands Point
County	Nassau
State	NY
Zip Code	11050

Amenities

Is Waterfront	Yes
Waterfront	Sound

Exterior

Lot Description	2.19
-----------------	------

School Information

District Port Washington

Additional Information

Date Listed June 6th, 2019

Days on Market 76

Zoning Residential

Listing Details

Listing Information Provided Courtesy of: Douglas Elliman Real Estate



The source of the displayed data is either the property owner or public record provided by non-governmental third parties. It is believed to be reliable but not guaranteed. This information is provided exclusively for consumers' personal, non-commercial use.

Information Copyright 2019, Multiple Listing Service of Long Island, Inc. All Rights Reserved.