

# **\$354,000 - 220 Birchwood Road # 220, Medford**

---

MLS#3369804

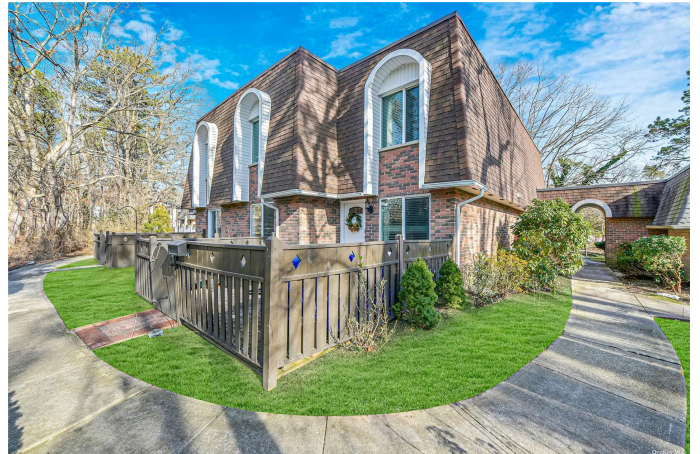
**\$354,000**

2 Bedroom, 2.00 Bathroom, 1,100 sqft

Residential on 0.01 Acres

Blue Ridge, Medford, NY

Sophisticated corner Carleton unit. Perfectly located on the GOLF COURSE & close to amenities with a front row view of the 9 hole meticulously kept BR Golf Course. BONUS UPGRADES include a radiant electric fireplace, unique shiplap walls in DR, new dryer vent w/ fan, Nest thermostat, chef's kitchen with SS appliances, pantry cabinet, slow close cabinetry w/ pull out drawers, 3 add'l closets downstairs w/ hideaway workstation desk, Walk in tiled shower in main BR, extd 1/2 bath widened, Mirrored closets, Pull down attic stairs, HW Heater, HVAC, Windows, Door, Wash/Dry, and exp patio w/ pavers and fence. 2 Bedrooms with XL walk in closets, additional closet space in bedrooms & bath, pantry & linen closet (Tons of storage). Call today to schedule a private showing. Prime Location - GOLFER'S PARADISE! Amenities: Golf course, 3 Pools, Hot tub, Sauna, Locker/Fitness/Gym, Tennis, Basketball, 3 Playgrounds, Library, Billiards/game rooms, Cafe, Tikki Bar. PRIDE of ownership shows!



Built in 1973

## **Essential Information**

MLS#	3369804
Price	\$354,000
Sold Price	\$365,000
Total Taxes	\$4,028

Bedrooms	2
Bathrooms	2.00
Full Baths	1
Half Baths	1
Square Footage	1,100
Lot Square Footage	559
Acres	0.01
Year Built	1973
Type	Residential
Sub-Type	Condominium
Style	Townhouse
Status	Closed

### Community Information

Address	220 Birchwood Road # 220
Subdivision	Blue Ridge
City	Medford
County	Suffolk
State	NY
Zip Code	11763

### Amenities

Amenities	Kitchen In Clubhouse, Gated
Parking	Parking Lot
View	Park/Greenbelt, Panoramic
Has Pool	Yes
Pool	In Ground

### Interior

Interior	Hardwood
Interior Features	Private Laundry, Eat-in Kitchen, Formal Dining, Living Room/Dining Room Combo, Pantry, Powder Room, Storage, Walk-In Closet(s), Wash/Dry Connection
Appliances	Dryer, Oven, Washer
Heating	Natural Gas, Forced Air
Cooling	Central Air
Fireplace	Yes
# of Fireplaces	1
Basement	None

**Exterior**

Exterior Features	Basketball Court, Sprinkler System, Tennis Court(s)
Lot Description	Near Public Transit, Private
Construction	Brick

**School Information**

District	Patchogue-Medford
Elementary	Eagle Elementary School
Middle	Oregon Middle School
High	Patchogue-Medford High School

**Additional Information**

Date Listed	January 14th, 2022
Date Sold	March 15th, 2022
Days on Market	17
HOA Fees	\$524
HOA Fees Freq.	Monthly

**Listing Details**

Listing Provided By	Realty Connect USA L I Inc
---------------------	----------------------------



The source of the displayed data is either the property owner or public record provided by non-governmental third parties. It is believed to be reliable but not guaranteed. This information is provided exclusively for consumers' personal, non-commercial use.