

\$799,000 - 17 Old Homestead Road, Port Jefferson

MLS#3320187

\$799,000

4 Bedroom, 3.00 Bathroom,
Residential on 0.55 Acres

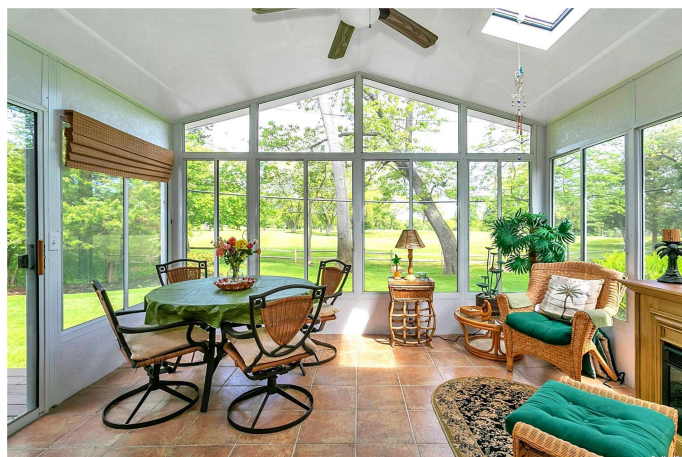
N/A, Port Jefferson, NY

COUNTRY CLUB LIFESTYLE--Overlooking the 17th hole at the back 9! After your game relax at the PJ Beach and then dine at nearby PJ Country Club indoors or on the deck overlooking LI Sound. All Port Jefferson amenities included! This Ranch-style home was renovated 5 years ago with new heating, central air conditioning, windows, flooring, eat-in kitchen (cathedral ceiling, custom window & cabinetry, quartz counters & stainless appliances) plus 3 baths. Foyer leads to surprise 40' Living/Dining Room with 9' ceiling & ambient lighting, marble fireplace & slider to patio. Dining Room with wet bar & sliders to sunroom overlooks the golf course. Master en suite features walk-in closet, bath with whirlpool tub, shower and slider to patio off Living Room. Lower level features private entrance to 4th bedroom with bath & walk-in closet. Full Basement, lots of space and 2.5 car garage with room for 3 cars!

Built in 1966

Essential Information

MLS#	3320187
Price	\$799,000
Sold Price	\$799,000
Total Taxes	\$13,307
Bedrooms	4
Bathrooms	3.00
Full Baths	3



Lot Square Footage	23,958
Acres	0.55
Year Built	1966
Type	Residential
Sub-Type	Single Family Residence
Style	Ranch
Status	Closed

Community Information

Address	17 Old Homestead Road
Subdivision	N/A
City	Port Jefferson
County	Suffolk
State	NY
Zip Code	11777

Amenities

Features	Wooded
Parking	Private, Attached, 2 Car Attached, Driveway
# of Garages	2
Garages	Private, Attached, 2 Car Attached, Driveway
View	Panoramic
Waterfront	Beach Access

Interior

Interior	Hardwood, Wall To Wall Carpet
Interior Features	Master Downstairs, 1st Floor Bedrm, Eat-in Kitchen, Entrance Foyer, Living Room / Dining Room, Master Bath, Cathedral Ceiling(s), Smart Thermostat, Walk-In Closet(s), Wet Bar
Appliances	Dishwasher, Dryer, Microwave, Oven, Refrigerator, Washer, ENERGY STAR Qualified Dishwasher, ENERGY STAR Qualified Dryer, ENERGY STAR Qualified Refrigerator, ENERGY STAR Qualified Stove, ENERGY STAR Qualified Water Heater, Wine Cooler
Heating	Oil, Baseboard, Hot Water, ENERGY STAR Qualified Equipment
Cooling	Central Air
Fireplace	Yes
# of Fireplaces	1
Has Basement	Yes
Basement	Full

Exterior

Exterior	Frame, Cedar, Shake Siding, Stone
Exterior Features	Sprinkler Lawn System, Private Entrance
Lot Description	Wooded
Windows	Skylight(s), Insulated Windows, New Windows
Construction	Frame, Cedar, Shake Siding, Stone

School Information

District	Port Jefferson
Elementary	Edna Louise Spear Elementary School
Middle	Port Jefferson Middle School
High	Earl L Vandermeulen High School

Additional Information

Date Listed	June 9th, 2021
Date Sold	December 30th, 2021
Days on Market	125
Zoning	Residential
HOA Fees	\$0

Listing Details

Listing Provided By Daniel Gale Sotheby's International Realty



The source of the displayed data is either the property owner or public record provided by non-governmental third parties. It is believed to be reliable but not guaranteed. This information is provided exclusively for consumers' personal, non-commercial use.

Information Copyright 2022, Multiple Listing Service of Long Island, Inc. All Rights Reserved.